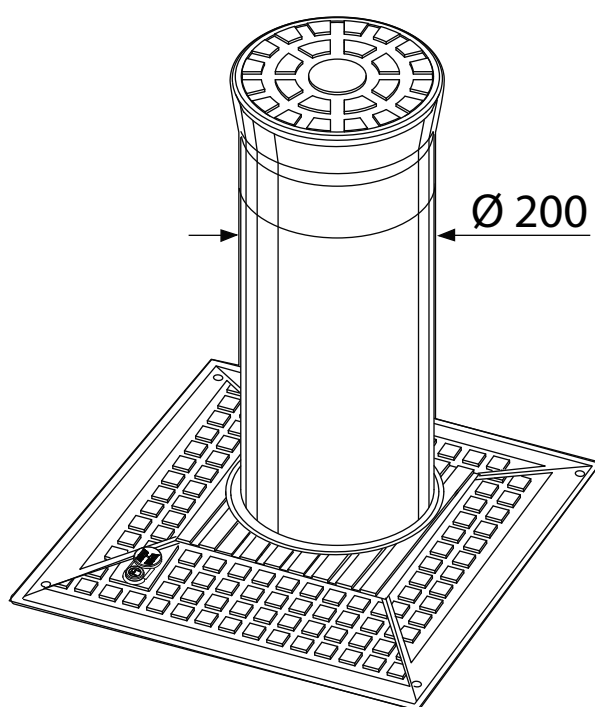


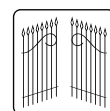


VIGILO 2250 - VIGILO 2251 VIGILO 2263 VIGILO 2280 - VIGILO 2281



EN 13241
EN 12453
EN 12445

Made in Italy



FADINI
the gate opener

INSTRUCTIONS TO BE FOLLOWED BEFORE INSTALLING THE OPERATOR

FOR OPTIMAL APPLICATION AND USE OF THE OPERATOR PLEASE READ THE INSTRUCTIONS AND CONSULT EXPLANATORY DIAGRAMS.

IMPORTANT: ALL INSTALLATION OPERATIONS MUST BE PERFORMED BY A QUALIFIED TECHNICIAN, IN OBSERVANCE OF THE EN 12453 - EN 12445 SAFETY REGULATIONS AND MACHINERY DIRECTIVE 2006/42/CE. CAREFUL RISK ANALYSIS IS REQUIRED UNDER APPLICABLE REGULATIONS.

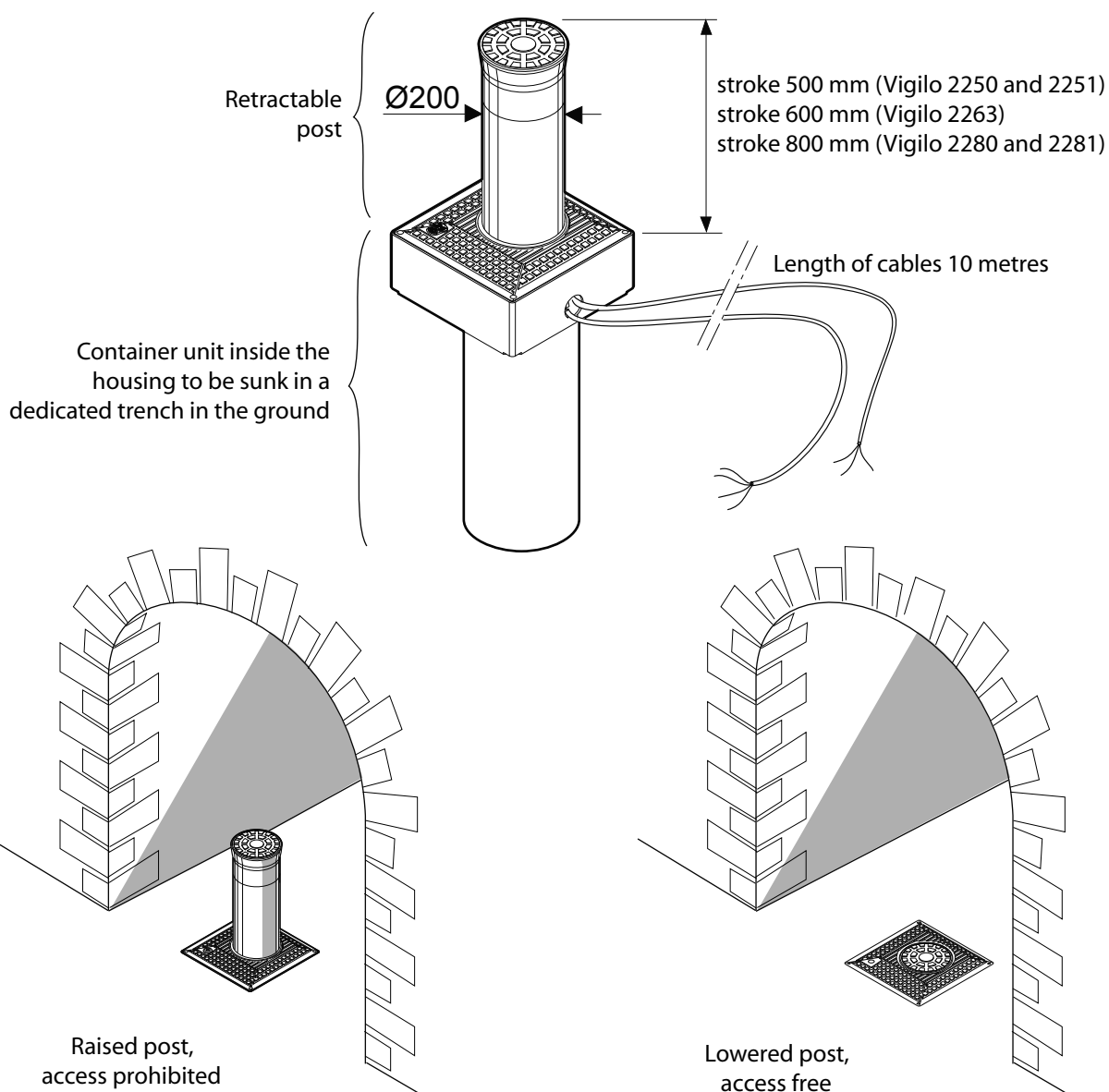
OVERVIEW

This product belongs to our range of retractable traffic control posts. It is quick and easy to install, as it does not need to be adjusted or calibrated and has been designed to regulate and prohibit vehicular access.

The oil-hydraulic bollards **VIGILO 2250** (500 mm height), **VIGILO 2251** (500 mm height, with LEDs), **VIGILO 2263** (600 mm height, with or without LEDs), **VIGILO 2280** (800 mm height) and **VIGILO 2281** (800 mm height, with LEDs) are fitted with posts made of rust-treated steel, **200 mm** diameter.

The product's hallmark is its ease of installation: once the housing has been secured, the operator can be introduced ready for operation, as soon as the wiring has been completed. As soon as the retractable post receives a command (from a key switch or radio transmitter), it rises from its interred position. The post is clearly visible at nighttime thanks to a reflective strip and the possibility of connecting a flashing light or traffic light. Versions with led lights are also available to signal when the post is in the fully up position and when moving up or down.

Using the electronic microprocessor programmer, the operator can also be customised with presence indicator accessories (magnetic coils, photocells).



pic. 1

PRELIMINARY WARNINGS ON SAFETY AND GOOD OPERATION**PRELIMINARY OPERATIONS**

Before commencing operator installation, it is essential to remember:

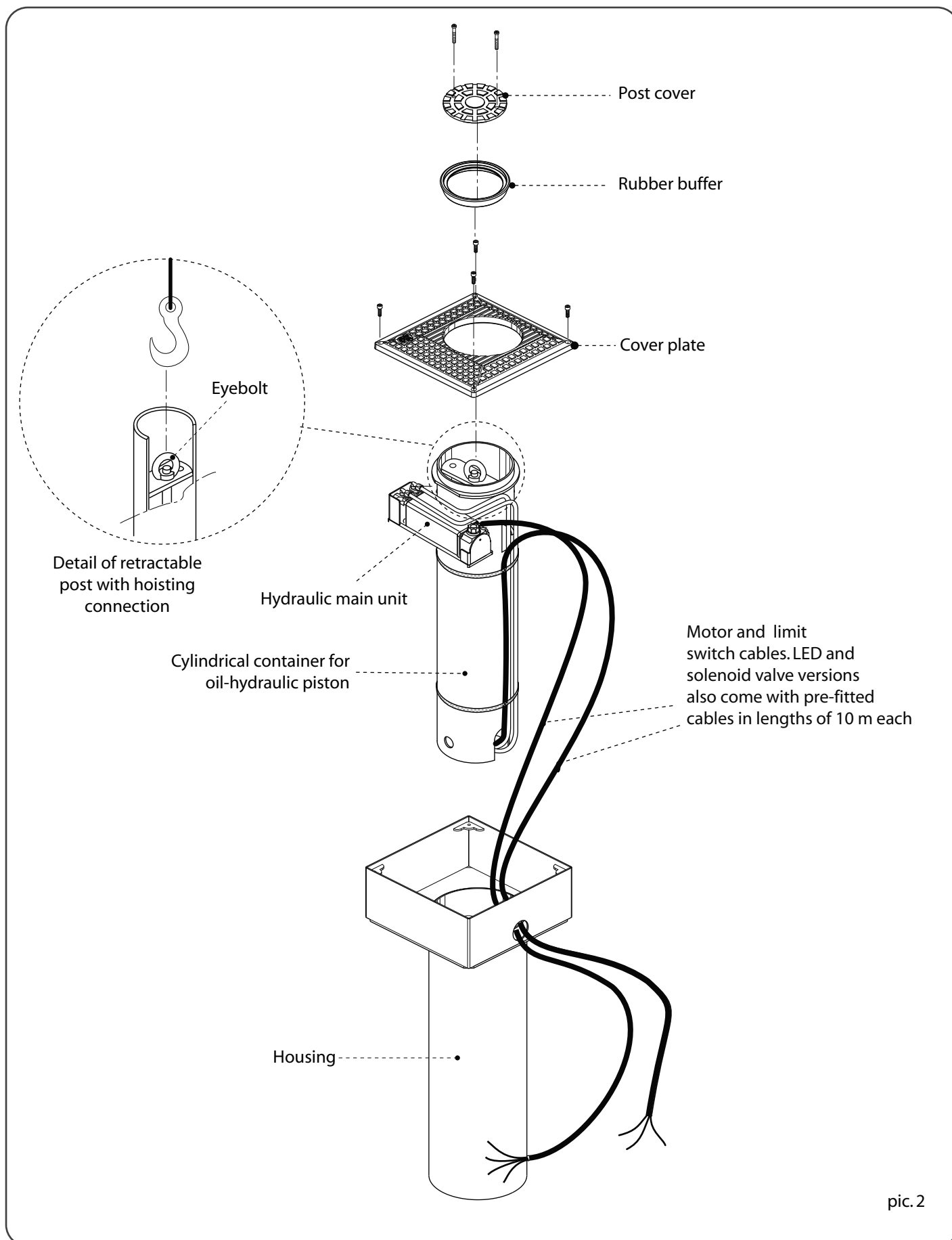
- That installation, checking, testing, risk analysis and subsequent maintenance work must be performed by authorised, qualified technicians.
- This operator has been designed for the use described in this manual only, and using at least the safety, control and indication accessories as here recommended.
- Any other application not explicitly indicated in this manual could cause malfunction, damage or personal injury.
- To check that the ground is stable, to avoid subsequent settling or deformation in the traffic control post installation area.
- To check that there are no nearby buried utility pipes.
- To check that there are no sources of electromagnetic disturbance in the immediate vicinity of and below the installation accessories such as to conceal or influence the magnetic/electromagnetic detection of the metal detectors and/or other electronic system control and management appliances.
- To check that the mains supply and voltage to the electric motor is 230 V at 50 Hz.
- The power supply to the operator's built-in motor must be made using electricity cables with a 1,5 mm² section for a maximum distance of 50 metres. For distances of over 50 metres, use electric cables with sections suited to the installation.
- Always use the original components indicated by the manufacturer to replace elements or accessories.
- The manufacturer reserves the right to make changes to this manual without giving notice.
- **Meccanica Fadini declines all responsibility for improper use not specifically indicated in this manual and any malfunction deriving from the use of materials or accessories other than those indicated by the manufacturer.**

PRELIMINARY OPENING OF ALL FUNCTIONAL COMPONENTS

Start by removing the **cover plate** to reveal the operator and separate the individual components, with the aid of a hoist. Pic.2: this makes it easy to extract the internal piston and hydraulic main unit container unit.

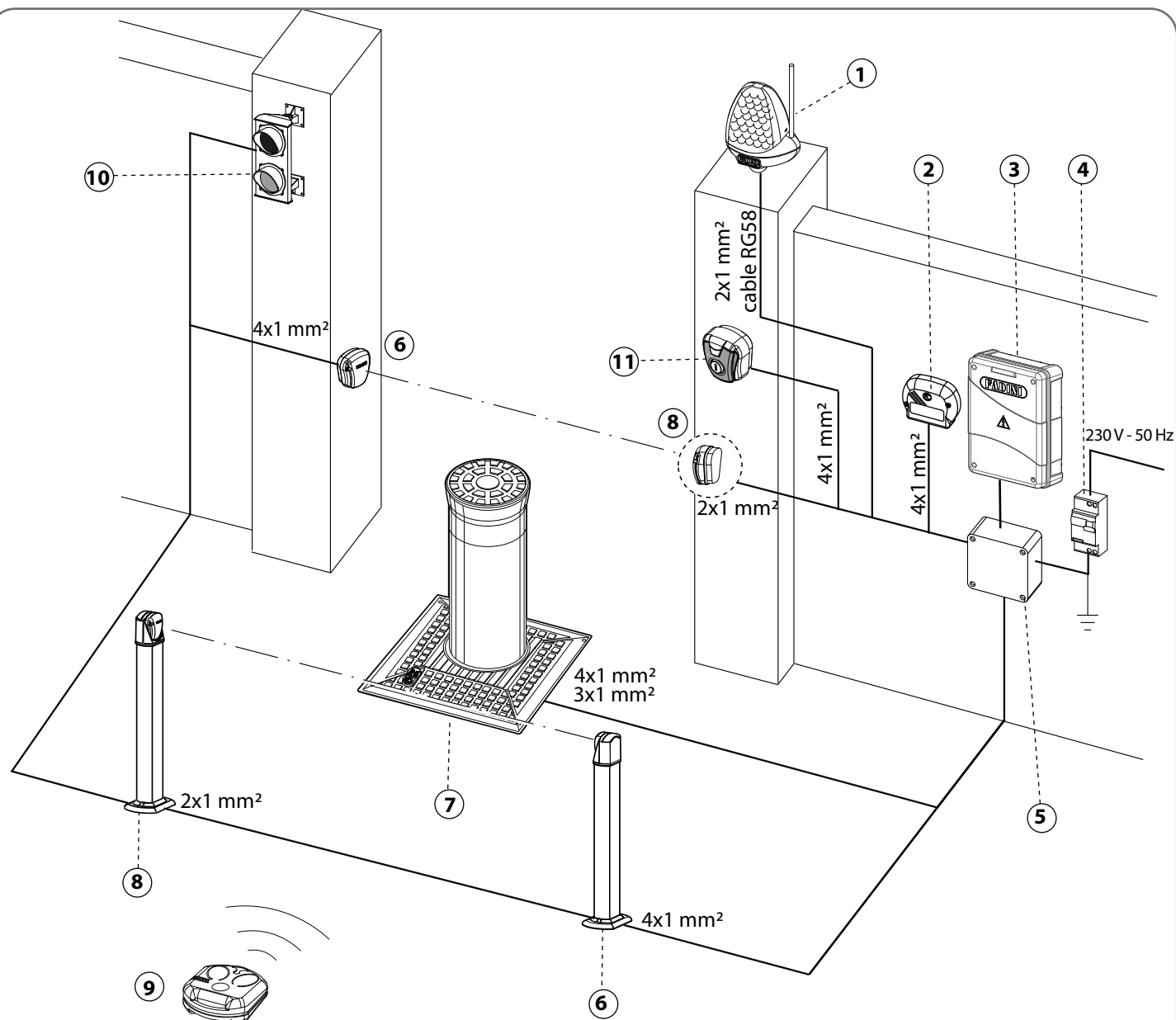
IMPORTANT: TAKE CARE NOT TO TEAR OR CUT WIRES.

English



ELECTRICAL LAYOUT OF THE INSTALLATION

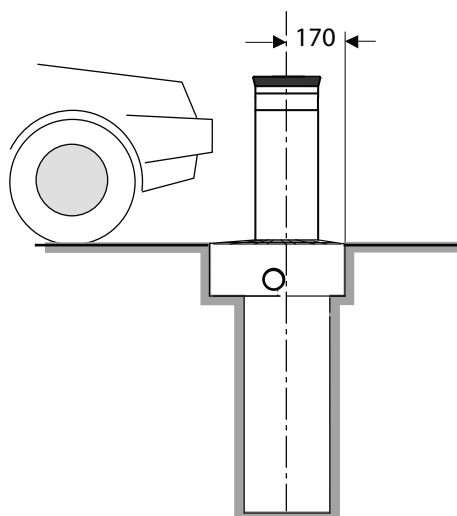
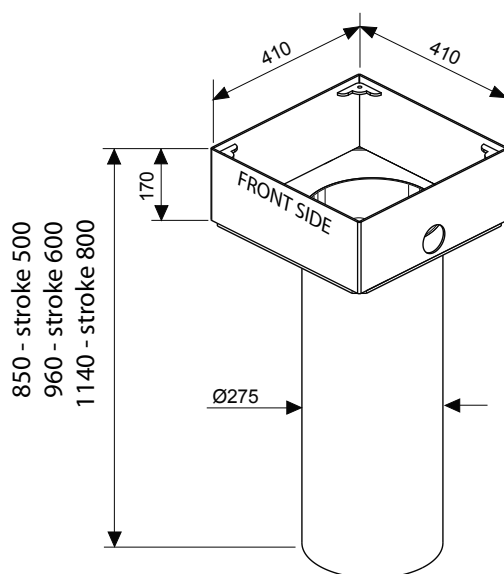
English



- 1 - MIRI 4-Led flashing light with built-in aerial
- 2 - Wall-mounted ASTRO 43 MQB radio receiver
- 3 - Elpro S40 electronic programmer
- 4 - Differential circuit breaker switch (sensitivity 30 mA, protection 6-10 A)
- 5 - Junction box, electric wires
- 6 - FIT 55 photocell receiver
- 7 - Post
- 8 - FIT 55 photocell projector
- 9 - ASTRO 43/2 small transmitter
- 10 - Traffic light with two lights
- 11 - CHIS 37 key-switch

pic. 3

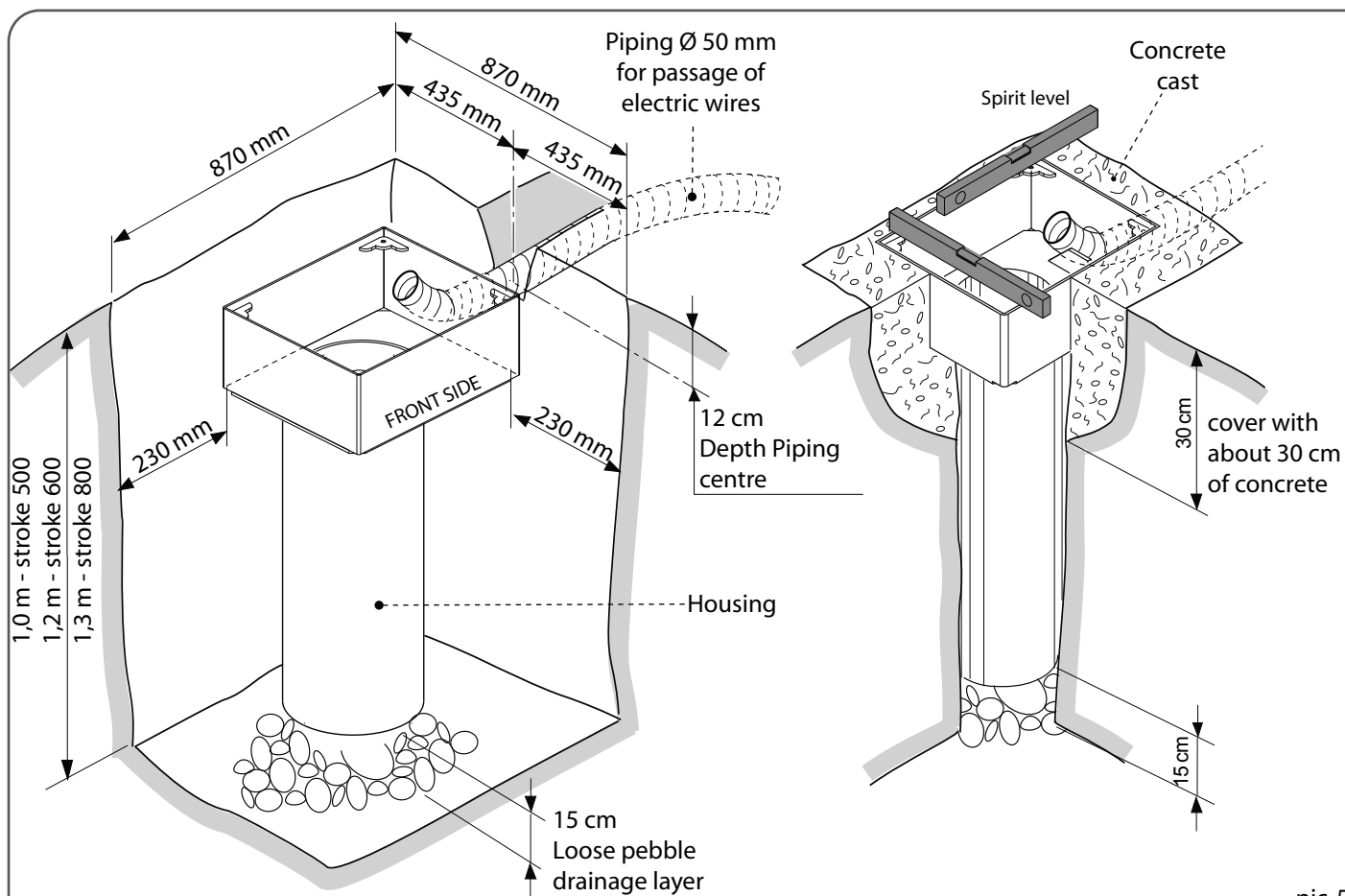
ARRANGING THE HOUSING



pic. 4



IMPORTANT: once the housing has been positioned and installation completed, it is important for the top edge to be level with the ground.



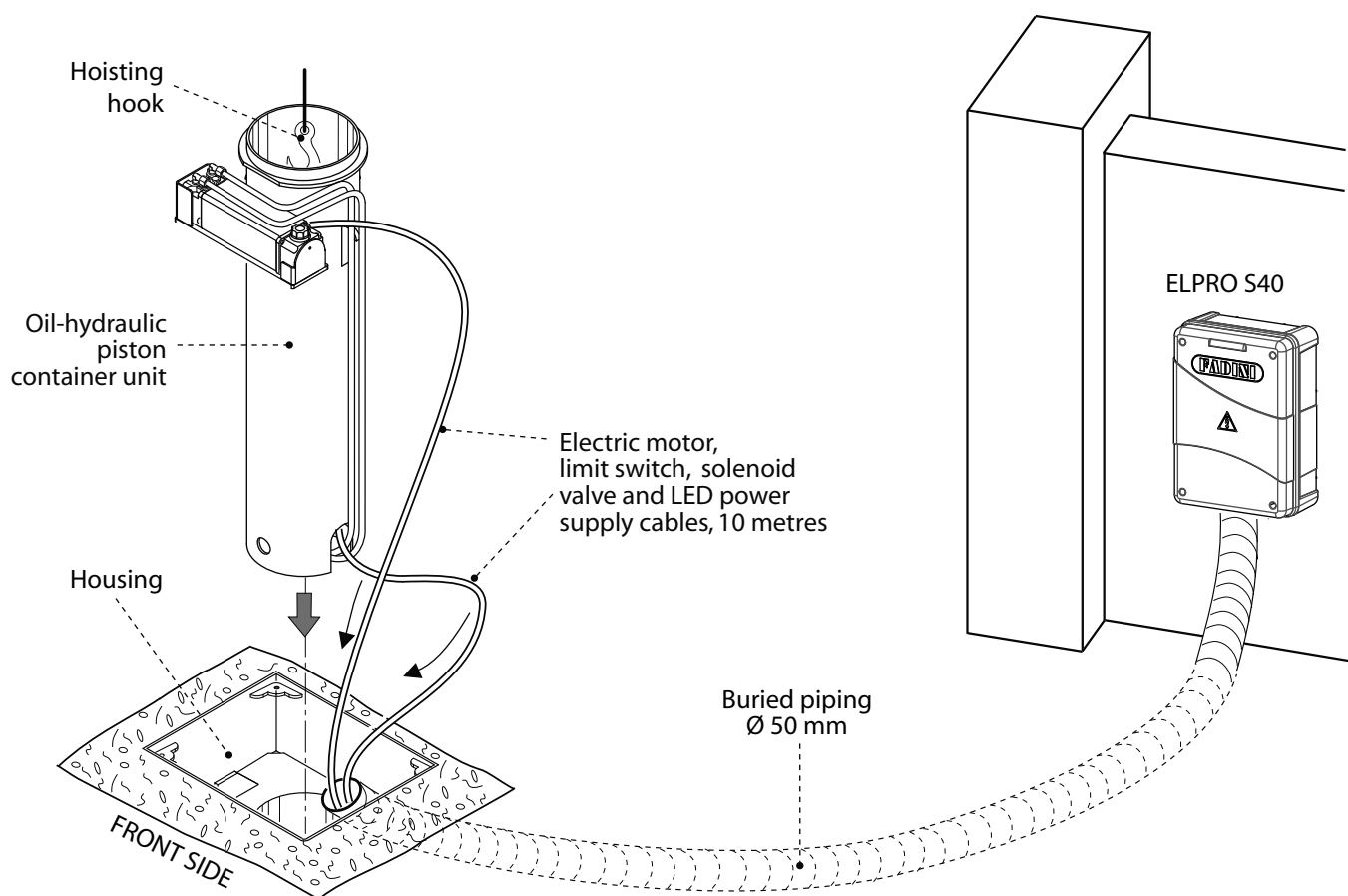
pic. 5

PLACING THE TRAFFIC CONTROL POST INSIDE THE HOUSING

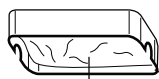
Before performing this operation, wait for the housing to be secured firmly in place. Do not commence **until the concrete has set** and the electric wire pipe has been secured and covered with soil.

- Use a hoisting hook to lift the piston unit with the post and main unit (using the **eyebolt**) and place on top of the **housing**.
- The subsequent phase of this operation consists in threading the motor, limit switch, solenoid valve and LED power supply electric wires through the piping and simultaneously starting to delicately place the operator inside the housing.

! IMPORTANT: PASS THE MOTOR, LIMIT SWITCH, SOLENOID VALVE AND LED POWER SUPPLY ELECTRIC WIRES THROUGH THE PIPING WITHOUT TEARING OR CUTTING THE CABLES.



! For distances greater than 10 metres, make extensions using sealed junction boxes inside an accessible dividing box



Junction boxes



Seal the junction boxes using bands

pic.6

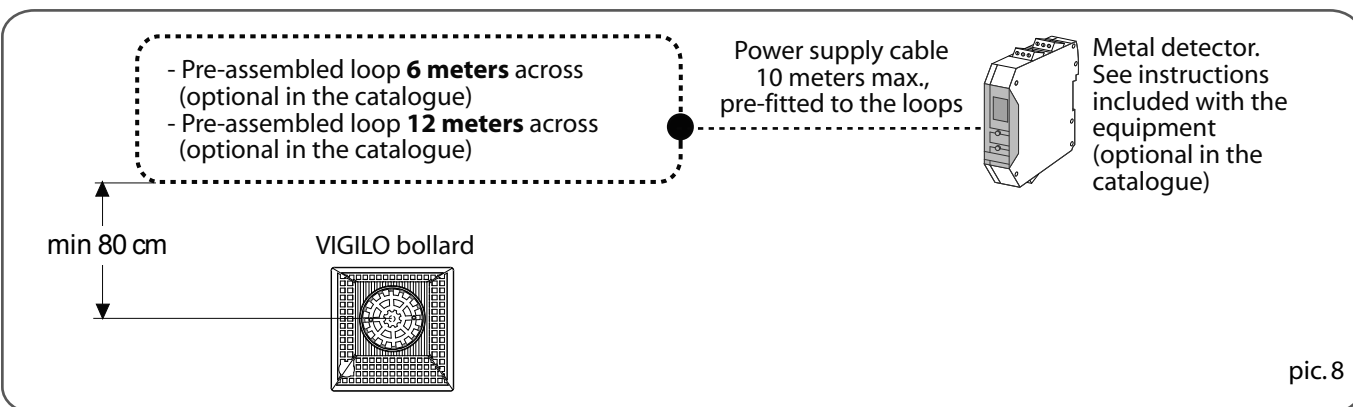
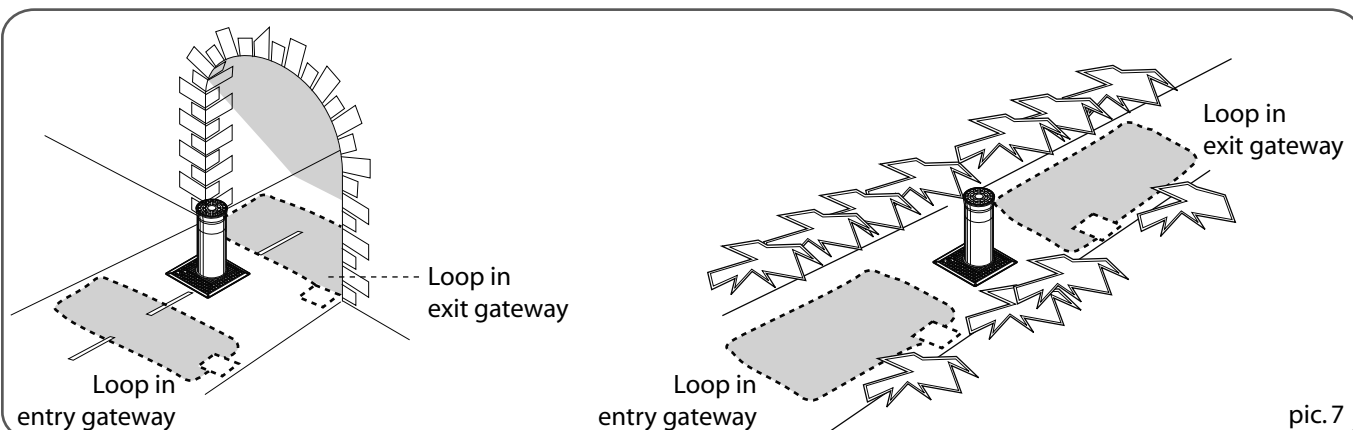
MAGNETIC LOOP PREPARATIONS

IMPORTANT: make sure that no other electro-magnetic sources are located on or under the ground near the installation to prevent interference or any affecting action with the magnetic loops of the vehicle detecting device if installed or with any other electronic equipment included in the system for commanding and controlling operations.

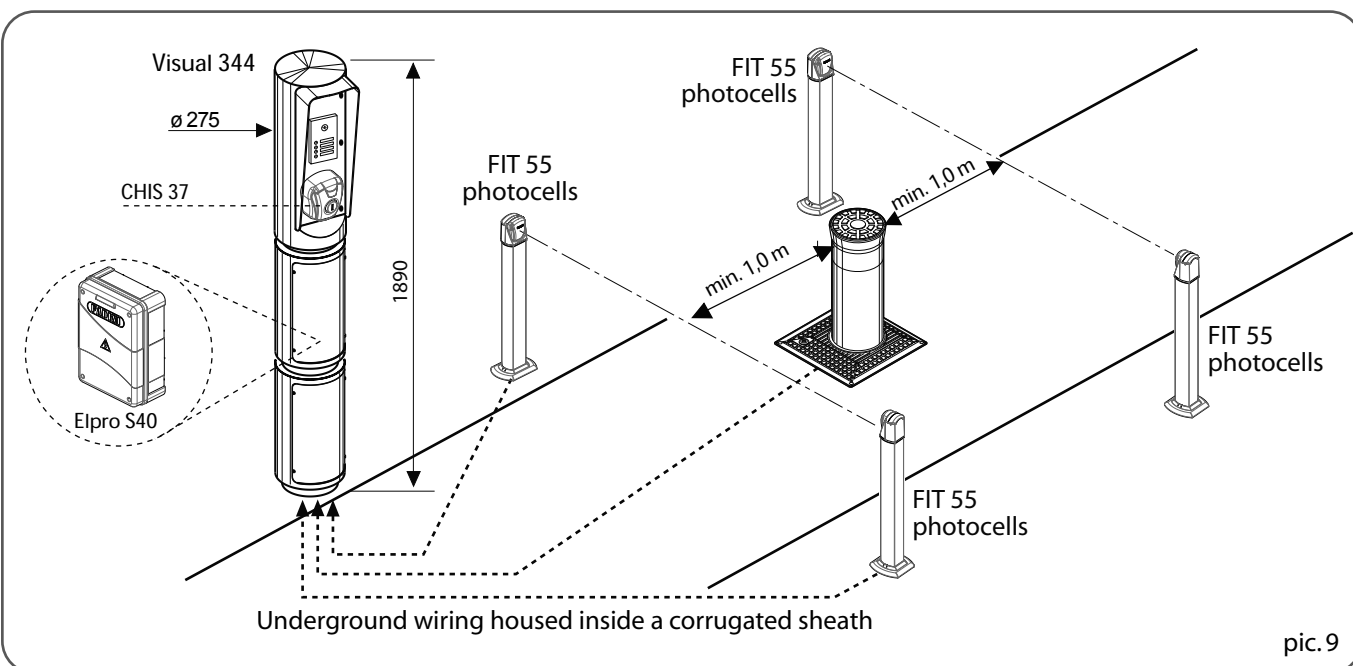
The magnetic loop detector is a safety device operating all the time to detect any transiting vehicle: the bollard is prevented from rising should a vehicle cross the loop.

A hole is to be dug in the ground as indicated (see relative instructions sheet).

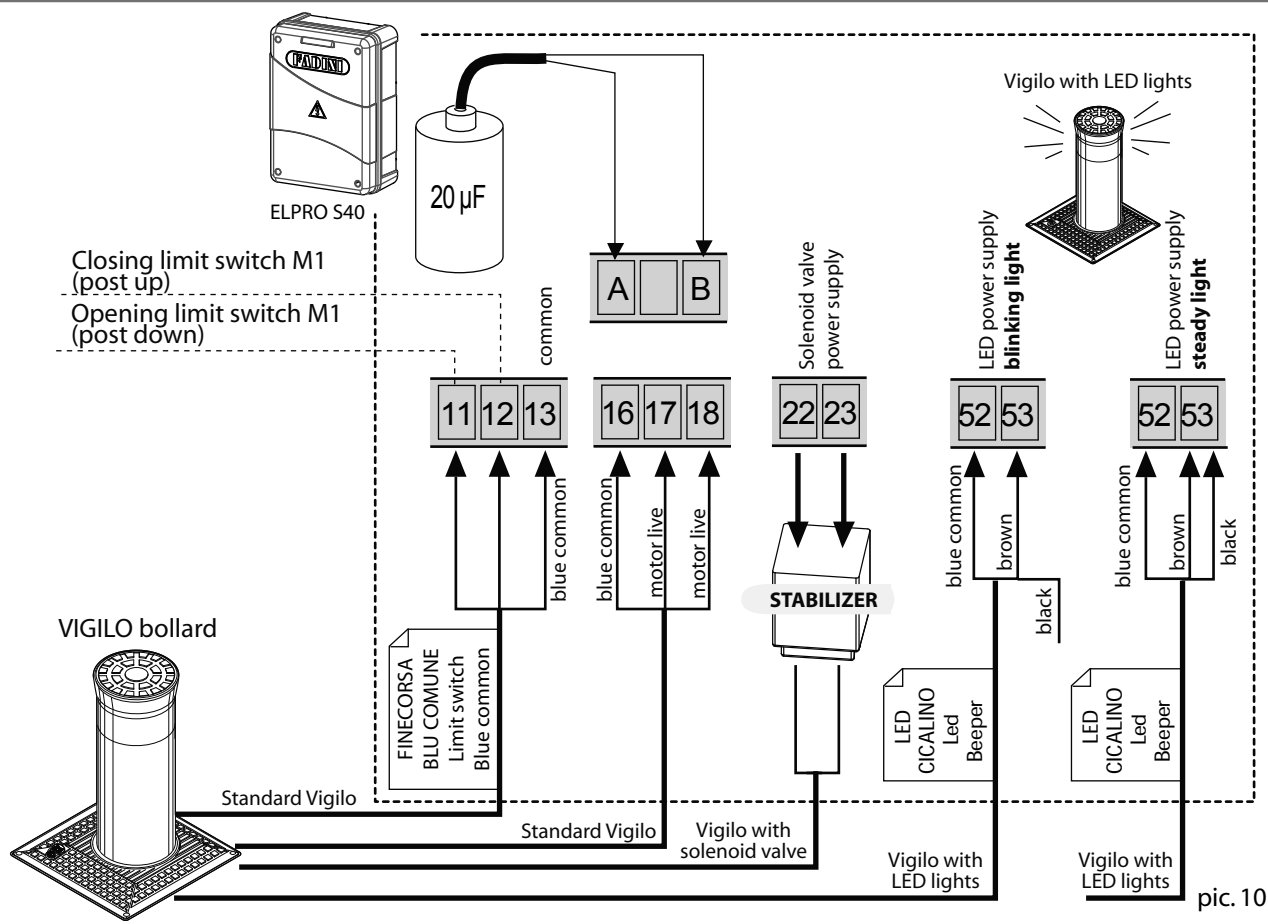
For proper and correct functioning of the loop detector it is recommended to strictly keep to the installation geometry as indicated in the instructions.



ARRANGEMENT OF THE PHOTOCELLS



ELECTRIC CONNECTIONS WITH THE PROGRAMMER



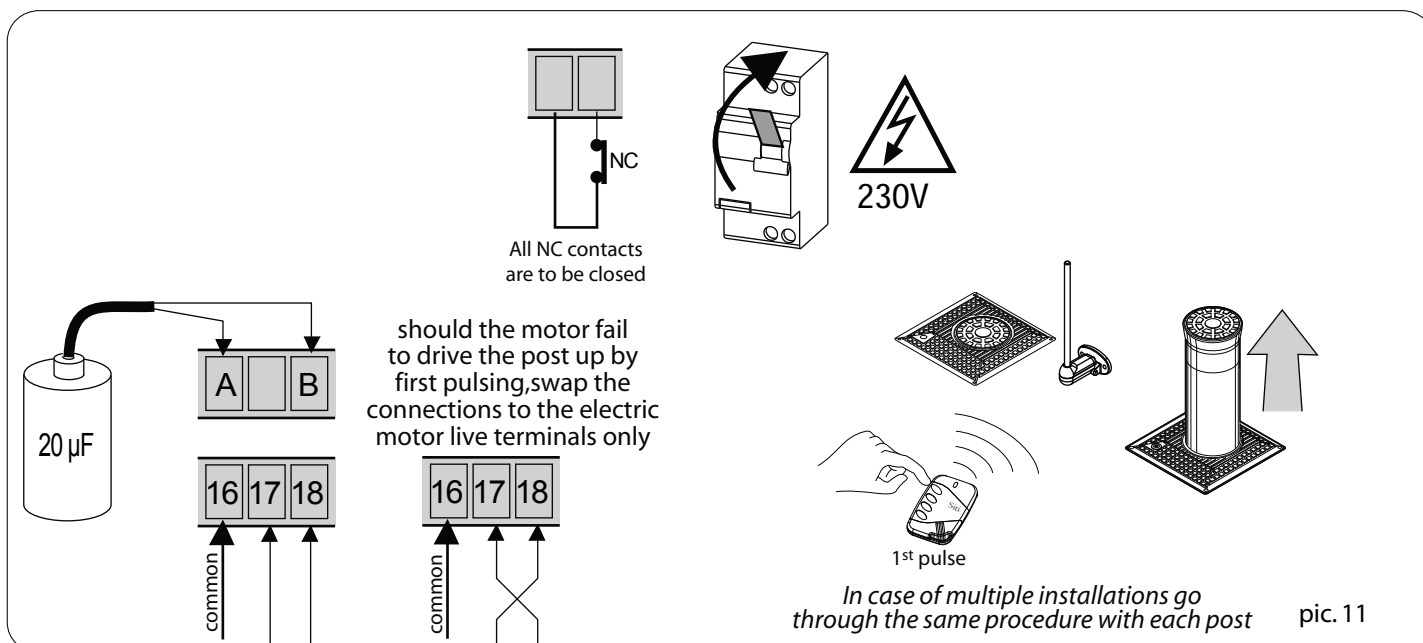
FIRST OPERATION MANOEUVRES

NOTE WELL: supply the system with electric power only after all of the electrical connections have been made as required for proper operations.

Having terminated installation of the traffic control post and all the safety and control accessories (**all of the NC contacts on the Elpro S40 board are to be bridged**), and the respective connections with the Elpro S40 programmer, and having completed thorough risk analysis, the first operation manoeuvres can be performed.

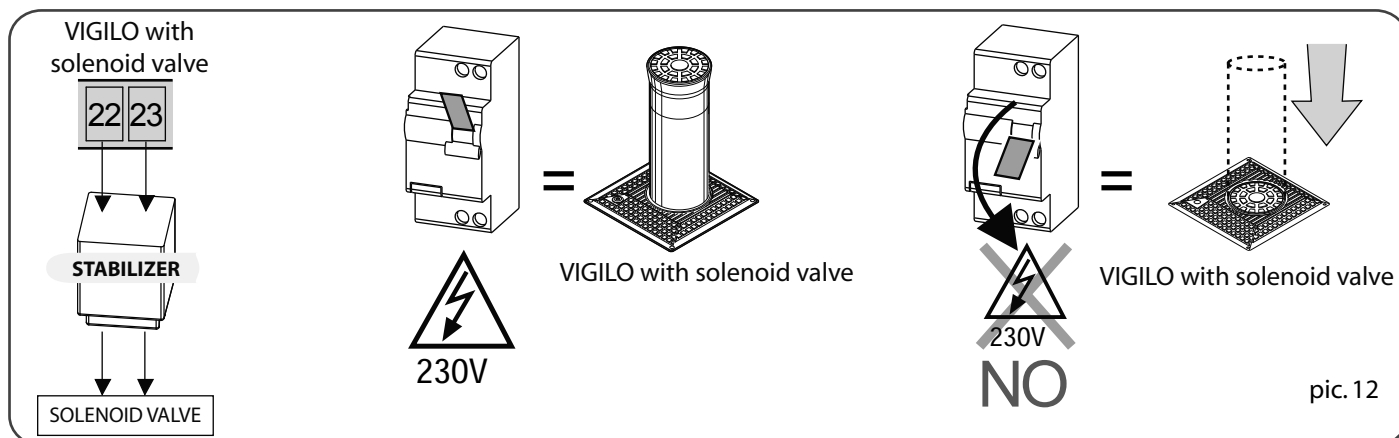
If you have a radio transmitter, encode the radio receiver according to the relative instructions before giving the command to raise the retractable post, or give the manoeuvre command using a key switch.

Once power is supplied, connect the motor/pump cable and, satisfied that the limit switch LEDs are properly aligned, the post should move up on the first commanding pulse; should it fail, **disconnect power supply and swap the connections to the live terminals**.

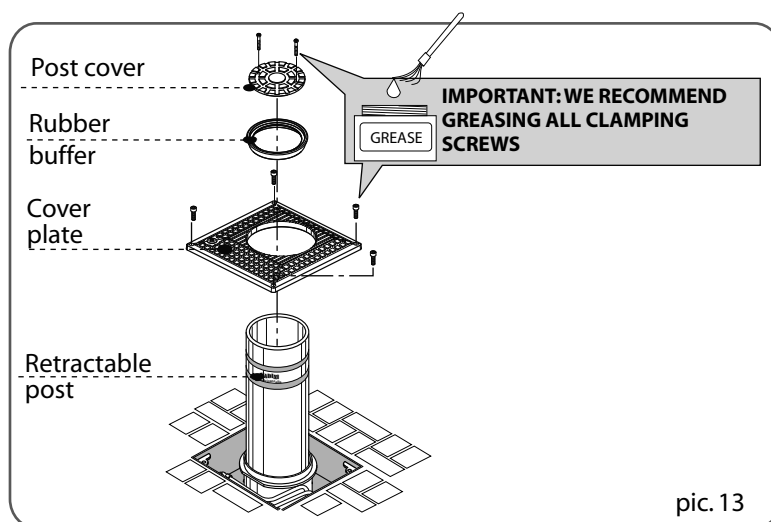


VERSION OF CORAL WITH SOLENOID VALVE

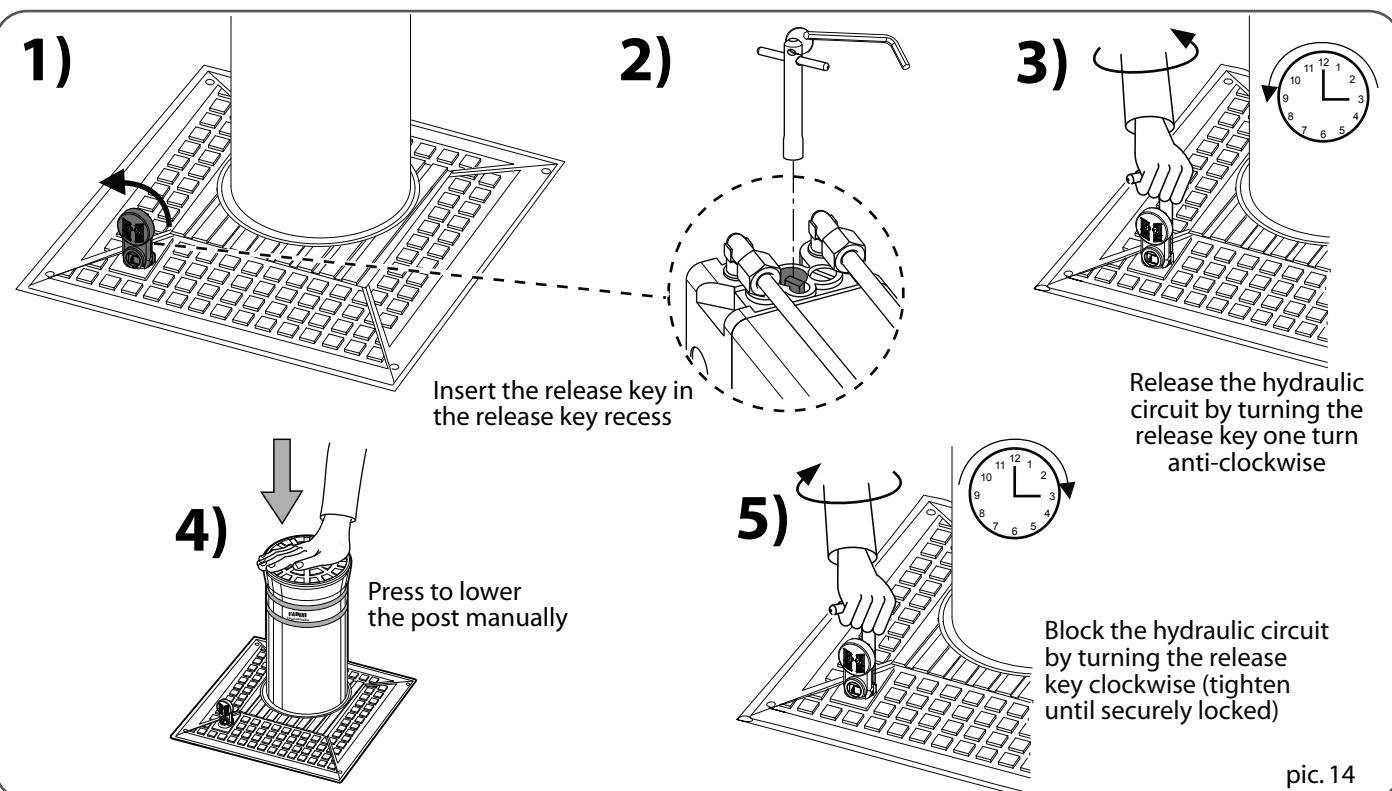
In the version of **VIGILO with solenoid valve** no manual overriding action is needed, and in case of power failure the post descends automatically flush with pavement level. To enable the solenoid valve to operate properly, the electric wires labelled "ELECTROVALVE" from the post assembly are to be connected, through the **voltage stabilizer**, to terminals 22 and 23 in the Elpro S40 control box.

**GROUND-LEVEL CLOSURE - COVER PLATE**

- Use the four screws to close the Cover Plate.
- Lift the retractable post for facilitate closure of the post cover with the buffer, give the command (by encoding a transmitter with the radio receiver or a key switch) to lift the retractable post.

**MANUAL RELEASE OPERATIONS**

In the case of a blackout, the post can be lowered manually following the instructions show in Pic. 14.



DECLARATION OF CONFORMITY

Manufacturer:



via Mantova 177/A - 37053 Cerea (VR) - tel. +39 0442 330422 - fax +39 0442 331054
www.fadini.net - info@fadini.net

hereby declares under its own responsibility that:

retractable traffic control post, diameter 200 and stroke 500 mm:

Vigilo 2250 and Vigilo 2251 version with LEDs

is conforming to machinery directive 2006/42/CE

VIGILO 2250 and VIGILO 2251 (version with LEDs) are sold for installation as an automated system, with original accessories and components indicated by the Manufacturer.

Pursuant to legal provisions, the operator is a "machine" and consequently, the Installer must comply with all applicable safety regulations.

The Installer is obliged to issue his/her own Declaration of Conformity.

The Manufacturer declines all responsibility for improper use of the product.

The product is conforming to the following specific regulations:

- Risk analysis and subsequent operations to eliminate them: EN 12445 and EN 12453
- Low Voltage directive: 2006/95 CE
- Electromagnetic Compatibility Directive: 2004/108/CE

In order to certify the product, the Manufacturer declares under its own responsibility that it complies with PRODUCT STANDARD EN 13241-1

Date: 10-01-2014

Supervisor



FADINI
the gate opener
made in Italy

DECLARATION OF CONFORMITY

Manufacturer:



via Mantova 177/A - 37053 Cerea (VR) - tel. +39 0442 330422 - fax +39 0442 331054
www.fadini.net - info@fadini.net

hereby declares under its own responsibility that:

retractable traffic control post, diameter 200 and stroke 600 mm:

Vigilo 2263 version with and without LEDs

is conforming to machinery directive 2006/42/CE

VIGILO 2263 (version with and without LEDs) is sold for installation as an automated system, with original accessories and components indicated by the Manufacturer.

Pursuant to legal provisions, the operator is a "machine" and consequently, the Installer must comply with all applicable safety regulations.

The Installer is obliged to issue his/her own Declaration of Conformity.

The Manufacturer declines all responsibility for improper use of the product.

The product is conforming to the following specific regulations:

- Risk analysis and subsequent operations to eliminate them: EN 12445 and EN 12453
- Low Voltage directive: 2006/95 CE
- Electromagnetic Compatibility Directive: 2004/108/CE

In order to certify the product, the Manufacturer declares under its own responsibility that it complies with PRODUCT STANDARD EN 13241-1

Date: 10-01-2014

Supervisor



FADINI
the gate opener
made in Italy

DECLARATION OF CONFORMITY

Manufacturer:



via Mantova 177/A - 37053 Cerea (VR) - tel. +39 0442 330422 - fax +39 0442 331054
www.fadini.net - info@fadini.net

hereby declares under its own responsibility that:

retractable traffic control post, diameter 200 and stroke 800 mm:

Vigilo 2280 and Vigilo 2281 version with LEDs

is conforming to machinery directive 2006/42/CE

VIGILO 2280 and VIGILO 2281 (version with LEDs) are sold for installation as an automated system, with original accessories and components indicated by the Manufacturer.

Pursuant to legal provisions, the operator is a "machine" and consequently, the Installer must comply with all applicable safety regulations.

The Installer is obliged to issue his/her own Declaration of Conformity.

The Manufacturer declines all responsibility for improper use of the product.

The product is conforming to the following specific regulations:

- Risk analysis and subsequent operations to eliminate them: EN 12445 and EN 12453
- Low Voltage directive: 2006/95 CE
- Electromagnetic Compatibility Directive: 2004/108/CE

In order to certify the product, the Manufacturer declares under its own responsibility that it complies with PRODUCT STANDARD EN 13241-1

Date: 10-01-2014

Supervisor



FADINI
the gate opener
made in Italy

TECHNICAL DATA

Hydraulic main unit

Hydraulic pump	P10
Operating pressure	2 MPa (20 bar)
Working temperature	-20 °C +80 °C
Oil type	OIL FADINI - code 708L
Protection class	IP 67
Pre-set thrust power	15 daN

Electric motor

Output	0,25 kW (0,33 HP)
Consumption power	330 W
Supply voltage	230 Vac - 50 Hz
Rated current	1,8 A
Max. current	6 A
Service mode	S3

Oil-hydraulic piston

Plunger diameter	30 mm
Rod diameter	16 mm
Net rod stroke	500 mm (Vigilo 2250 and 2251) 600 mm (Vigilo 2263) 800 mm (Vigilo 2280 and 2281)

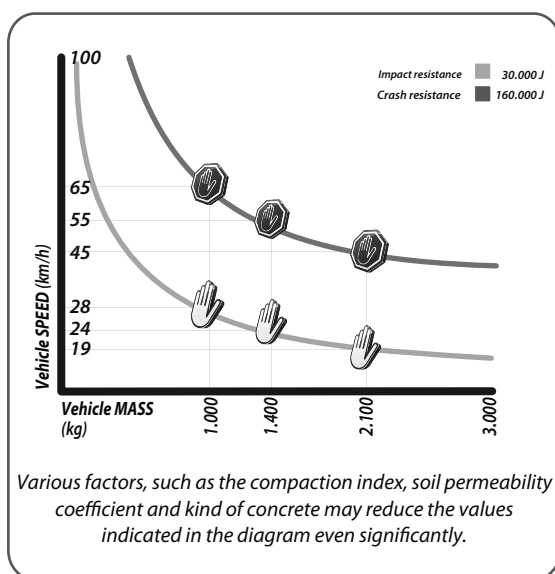
Post Features

Material	Fe 360 Steel
Diameter	Ø 200 mm
Thickness	4 mm
Treatment	cataphoresis
Post finishing	Powder coating polyester RAL 7016 - Anthracite Gray

Post material Stainless Steel/Inox version AISI 304

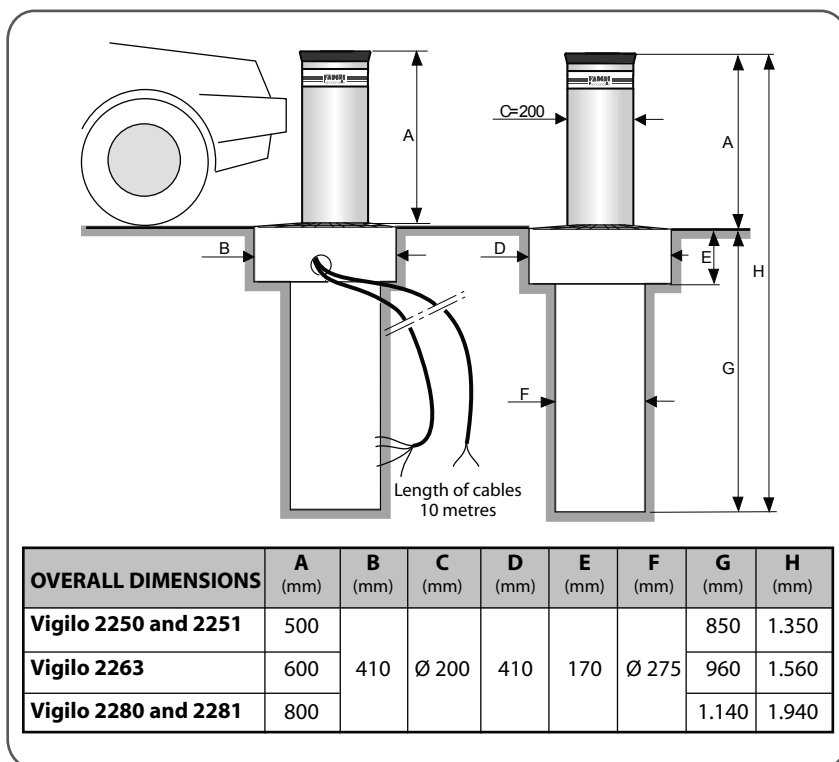
Features of Structural components

Material	Fe 360 Steel
Enclosure	Hot galvanized
Housing assembly	Zinc-coated



Vigilo 2250 and 2251 Vigilo 2263 Vigilo 2280 and 2281

Rising time	~ 5,1 s	~ 5,9 s	~ 7,7 s
Lowering time	~ 4,3 s	~ 5,2 s	~ 7,0 s
Frequency of use	intensive	intensive	intensive
Impact resistance	30.000 J	30.000 J	30.000 J
Crash resistance	160.000 J	160.000 J	160.000 J
Max. static load	20.000 kg	20.000 kg	20.000 kg
Weight	102 kg	110 kg	131 kg



IF THE OPERATOR IS REMOVED

- 1° - Disconnect the main switch before opening the lid of the electric cable junction box.
- 2° - **Do not cut the electric wires**, rather remove them from the terminal board loosening the clamping screws inside the dividing box.

ORDINARY MAINTENANCE AND WASTE DISPOSAL

For optimal performance of the system over time and operation in compliance with safety regulations, correct maintenance and checks must be performed on the operator, the electronic equipment constituting the installation and on wiring performed.

The entire installation should be carried out by authorized technicians, who are also to fill in the Maintenance Form as indicated in the Norms Book (available on request):

- 1° - Oil-hydraulic operator: maintenance check every 6 months.
- 2° - Electronic equipment and safety systems: a monthly maintenance check.
- 3° - Ordinary and extraordinary maintenance to be agreed upon between end user/contractor and installation agent.
- 4° - **Packaging materials such as cardboard, nylon, polystyrene, etc. should be disposed of using specialised waste collection firms.**

The manufacturer reserves the right to make amendments to this manual without prior notice and declines all responsibility for any errors, personal injury or damage to property.